

SUBJECT	PSA 7		FLORIDA		UNITED STATES	
	TOTAL	60+	TOTAL	60+	TOTAL	60+
<b>RESIDENCE 1 YEAR AGO</b>						
Population 1 year and over	2,443,047	466,224	19,160,208	4,703,633	310,385,254	61,151,720
Same house	84.20%	91.55%	83.70%	91.40%	85%	93.60%
Different house in the United States	14.78%	7.65%	15.40%	7.90%	14.40%	6.10%
Same county	8.65%	3.93%	9.70%	4.20%	9%	3.70%
Different county	6.10%	3.75%	5.70%	3.70%	5.50%	2.40%
Same state	3.50%	1.80%	3%	1.30%	3.20%	1.30%
Different state	2.63%	1.90%	2.70%	2.30%	2.30%	1.10%
Abroad	0.98%	0.78%	0.90%	0.70%	0.60%	0.30%
<b>PLACE OF BIRTH, CITIZENSHIP STATUS, AND YEAR OF ENTRY</b>						
Total Population	2,470,716	466,224	19,361,79	4,703,633	314,107,084	61,151,720
Native	2,082,543	379,399	15,571,96	3,711,827	273,050,199	53,234,323
Foreign Born	388,173	86,825	3,789,829	991,806	41,056,885	7,917,397
Entered 2010 or later	7.25%	4.05%	7.30%	4.20%	7.10%	2.80%
Entered 2000 to 2009	27.65%	10.63%	30.70%	12.30%	30.50%	10.10%
Entered before 2000	65.15%	85.33%	61.90%	83.50%	62.40%	87.10%
Naturalized U.S. citizen	55.83%	72.33%	51.70%	71.40%	45.80%	70.90%
Not a U.S. citizen	44.18%	27.68%	48.30%	28.60%	54.20%	29.10%
<b>LANGUAGE SPOKEN AT HOME AND ABILITY TO SPEAK ENGLISH</b>						
Population 5 years and over	2,326,886	466,224	18,284,956	4,703,633	294,133,373	61,151,720
English Only	72.20%	76.33%	72.20%	79.70%	79.10%	85.30%
Language other than English	27.80%	23.68%	27.80%	20.30%	20.90%	14.70%
Speak English less than "very well"	10.10%	14.40%	11.70%	12.80%	8.60%	8.50%

<b>SUBJECT</b>	<b>PSA 7</b>	<b>PSA 7</b>	<b>FLORIDA</b>	<b>FLORIDA</b>	<b>US</b>	<b>US</b>
	<b>TOTAL</b>	<b>60+</b>	<b>TOTAL</b>	<b>60+</b>	<b>TOTAL</b>	<b>60+</b>
<b>EMPLOYMENT STATUS</b>						
Population 16 years and over	1,986,161	466,224	15,817,611	4,703,633	248,775,628	61,151,720
In labor force	63.48%	27.48%	59.50%	24%	63.90%	28%
Civilian labor force	63.35%	27.48%	59.20%	24%	63.50%	28%
Employed	56.40%	25.10%	52.70%	21.90%	57.70%	26.20%
Unemployed	6.95%	2.40%	6.50%	2.10%	5.80%	1.80%
Percent of civilian labor force	11.03%	8.80%	10.90%	8.60%	9.20%	6.40%
Armed forces	0.13%	0%	0.30%	0%	0.40%	0%
Not in labor force	36.53%	72.53%	40.50%	76%	36.10%	72%
<b>INCOME IN THE PAST 12 MONTHS (IN 2014 INFLATION ADJUSTED)</b>						
Households	883,537	265,486	7,217,508	2,748,753	116,211,092	36,944,324
With earnings	78.58%	47.98%	72.40%	40.90%	77.90%	46.60%
Mean earnings (dollars)	266,159	212,177	67,371	55,909	76,303	61,988
With Social Security Income	30.05%	76.78%	35.60%	79.90%	29.30%	76.30%
Mean Social Security Income (dollars)	70,599	74,821	18,153	19,073	17,636	18,633
With Supplemental Security Income	4.73%	5.60%	4.90%	5.60%	5.30%	6.60%
Mean Supplemental Security Income (dollars)	37,038	37,061	9,375	9,461	9,400	9,292
With cash public assistance income	2.15%	1.98%	2.20%	1.60%	2.80%	2%
Mean cash public assistance income (dollars)	13,391	12,856	3,283	3,633	3,720	3,558
With retirement income	16.73%	41%	19.30%	41.30%	17.80%	43.80%
Mean retirement income (dollars)	94,946	95,390	25,455	26,015	24,095	24,832
With Food Stamp/SNAP benefits	13.75%	10.43%	14.30%	9.90%	13%	9%

SUBJECT	PSA 7	PSA 7	FLORIDA	FLORIDA	US	US
	TOTAL	60+	TOTAL	60+	TOTAL	60+
<b>POVERTY STATUS IN THE PAST 12 MONTHS</b>						
Population for whom poverty status is determined	2,426,560	458,677	18,946,215	4,629,896	306,226,394	59,711,920
Below 100 percent of the poverty level	15.43%	9.83%	16.70%	10.80%	15.60%	9.60%
100 to 149 percent of the poverty level	11%	10.93%	10.90%	10.40%	9.60%	9.80%
At or above 150 percent of the poverty level	73.53%	79.30%	72.40%	78.80%	74.80%	80.60%
<b>HOUSING TENURE</b>						
Occupied housing units	883,537	265,486	7,217,508	2,748,753	116,211,092	36,944,324
Owner-occupied housing units	65.13%	80.80%	66.10%	82.20%	64.40%	78.40%
Renter-occupied housing units	34.88%	19.20%	33.90%	17.80%	35.60%	21.60%
Average household size of owner-occupied unit	2.84	2.27	2.61	2.03	2.70	2.03
Average household size of renter-occupied unit	2.79	1.89	2.66	1.79	2.52	1.64
<b>SELECTED CHARACTERISTICS</b>						
No telephone available	2.85%	2.25%	3.10%	2.10%	2.50%	1.70%
1.01 or more occupants per room	2.03%	0.63%	2.80%	0.80%	3.30%	0.90%
Owner-occupied housing units	557,164	215,006	4,772,944	2,260,619	74,787,460	28,978,656
<b>SELECTED MONTHLY OWNER COSTS AS A PERCENTAGE OF</b>						
Less than 30 percent	65.70%	66.38%	67.30%	69%	72.60%	72.60%
30 percent or more	34.30%	33.63%	32.70%	31%	27.40%	27.40%

<b>SUBJECT</b>	<b>PSA 7</b>	<b>PSA 7</b>	<b>FLORIDA</b>	<b>FLORIDA</b>	<b>US</b>	<b>US</b>
	<b>TOTAL</b>	<b>60+</b>	<b>TOTAL</b>	<b>60+</b>	<b>TOTAL</b>	<b>60+</b>
<b>OWNER CHARACTERISTICS</b>						
Median value (dollars)	150,000	140,600	156,200	151,000	175,700	169,200
Median selected monthly owner costs with a mortgage (dollars)	1,458	1,275	1,480	1,313	1,522	1,365
Median selected monthly owner costs without a mortgage (dollars)	456	447	469	468	457	454
Renter-occupied housing units	326,373	50,480	2,444,564	488,134	41,423,632	7,965,668
<b>GROSS RENT AS A PERCENTAGE OF HOUSEHOLD INCOME IN THE PAST 12 MONTHS</b>						
Less than 30 percent	45.75%	40.20%	45.50%	41.50%	51.70%	46.80%
30 percent or more	54.25%	59.80%	54.50%	58.50%	48.30%	53.20%
<b>GROSS RENT</b>						
Median gross rent	1,009	908	998	882	920	780

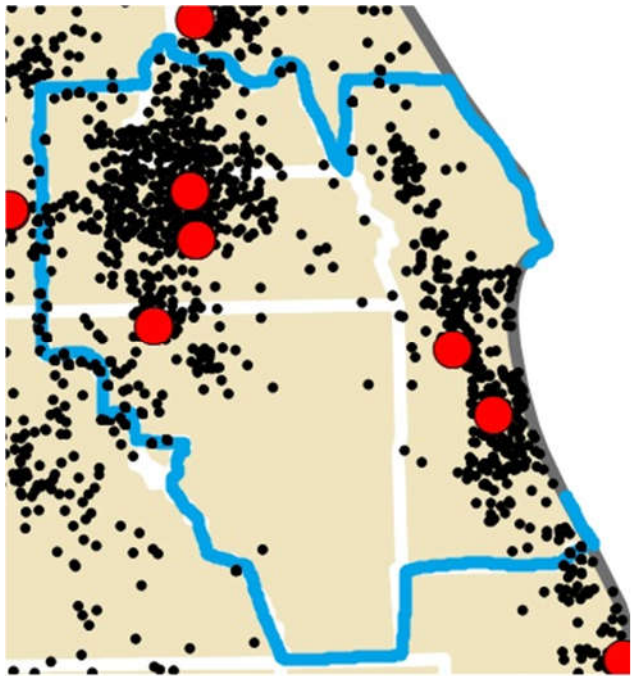
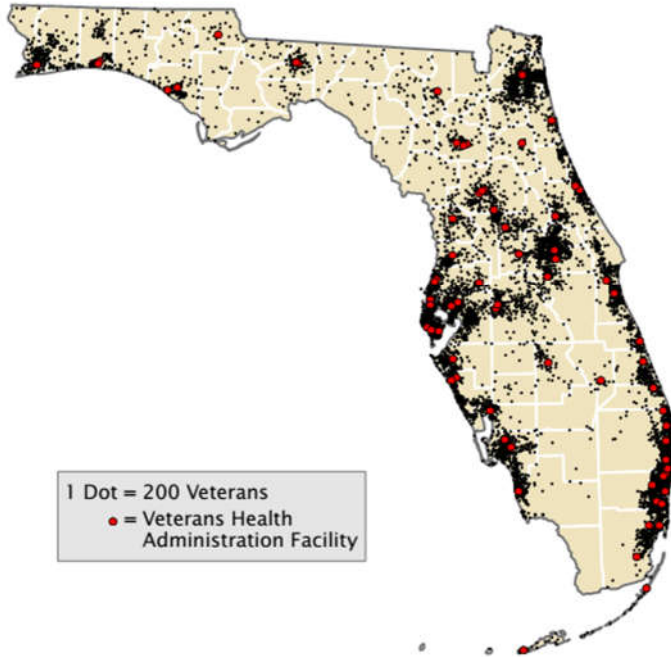
<b>2015 Census People QuickFacts</b>	<b>Brevard County</b>	<b>Orange County</b>	<b>Osceola County</b>	<b>Seminole County</b>	<b>Florida</b>	<b>United States</b>
Population estimates, July 1, 2014	556,885	1,253,001	310,211	442,516	19,893,297	318,857,056
Population estimates base, April 1, 2010	543,378	1,145,954	268,687	422,718	18,804,623	308,758,105
Population, percent change - April 1, 2010 (estimates base) to July 1, 2014	2.50%	9.30%	15.50%	4.70%	5.80%	3.30%
Population, Census, April 1, 2010	543,376	1,145,956	268,685	422,718	18,801,310	308,745,538
Persons under 5 years, percent, July 1, 2014	4.60%	6.20%	6.40%	5.20%	5.50%	6.20%
Persons under 18 years, percent, July 1, 2014	18.70%	22.70%	25.10%	21.40%	20.40%	23.10%
Persons 65 years and over, percent, July 1, 2014	22.60%	10.80%	12.70%	14.30%	19.10%	14.50%
Female persons, percent, July 1, 2014	51.20%	50.90%	51.00%	51.60%	51.10%	50.80%
White alone, percent, July 1, 2014 (a)	83.80%	69.00%	80.00%	80.60%	77.80%	77.40%
Black or African American alone, percent, July 1, 2014 (a)	10.70%	22.20%	13.40%	12.20%	16.80%	13.20%
American Indian and Alaska Native alone, percent, July 1, 2014 (a)	0.50%	0.60%	0.80%	0.40%	0.50%	1.20%
Asian alone, percent, July 1, 2014 (a)	2.40%	5.60%	3.00%	4.10%	2.80%	5.40%
Native Hawaiian and Other Pacific Islander alone, percent, July 1, 2014 (a)	0.10%	0.20%	0.20%	0.10%	0.10%	0.20%
Two or More Races, percent, July 1, 2014	2.50%	2.50%	2.60%	2.50%	2.00%	2.50%
Hispanic or Latino, percent, July 1, 2014 (b)	9.30%	29.20%	49.70%	19.20%	24.10%	17.40%
White alone, not Hispanic or Latino, percent, July 1, 2014	75.80%	43.30%	36.10%	63.60%	55.80%	62.10%
Veterans, 2010-2014	67,084	63,872	16,590	30,220	1,538,636	20,700,711
Foreign born persons, percent, 2010-2014	8.80%	19.40%	19.40%	11.80%	19.60%	13.10%
Housing units, July 1, 2014	272,297	508,051	133,981	185,882	9,144,250	133,957,180
Owner-occupied housing unit rate, 2010-2014	72.40%	56%	62.50%	69.60%	66.10%	64.40%
Median value of owner-occupied housing units, 2010-2014	\$138,500	\$161,900	\$124,500	\$175,100	\$156,200	\$175,700

<b>2015 Census People QuickFacts</b>	<b>Brevard County</b>	<b>Orange County</b>	<b>Osceola County</b>	<b>Seminole County</b>	<b>Florida</b>	<b>United States</b>
Median selected monthly owner costs -with a mortgage, 2010-2014	\$1,330	\$1,546	\$1,397	\$1,559	\$1,480	\$1,522
Median selected monthly owner costs -without a mortgage, 2010-2014	\$419	\$469	\$447	\$488	\$469	\$457
Median gross rent, 2010-2014	\$904	\$1,036	\$1,035	\$1,059	\$998	\$920
Building permits, 2014	1,286	9,246	3,414	967	84,075	1,046,363
Households, 2010-2014	221,582	423,609	90,414	147,932	7,217,508	116,211,092
Persons per household, 2010-2014	2.45	2.76	3.17	2.9	2.62	2.63
Living in same house 1 year ago, percent of persons age 1 year+, 2010-2014	84.80%	79.80%	85.90%	86.30%	83.70%	85.00%
Language other than English spoken at home, percent of persons age 5 years+, 2010-2014	10.20%	34.00%	47.80%	19.20%	27.80%	20.90%
High school graduate or higher, percent of persons age 25 years+, 2010-2014	90.50%	87.30%	84.20%	92.20%	86.50%	86.30%
Bachelor's degree or higher, percent of persons age 25 years+, 2010-2014	26.70%	30.60%	17.80%	35.00%	26.80%	29.30%
With a disability, under age 65 years, percent, 2010-2014	9.70%	7.00%	10.50%	7.00%	8.50%	8.50%
Persons without health insurance, under age 65 years, percent	20.00%	24.10%	26.80%	19.40%	20.10%	12.00%
In civilian labor force, total, percent of population age 16 years+, 2010-2014	56.30%	68.20%	63.10%	65.80%	59.20%	63.50%
In civilian labor force, female, percent of population age 16 years+, 2010-2014	52.00%	63.90%	58.50%	60.50%	55.00%	58.70%
Total accommodation and food services sales, 2007 (\$1,000) (c)	855,503	6,645,089	890,451	764,148	41,922,059	613,795,732
Total health care and social assistance receipts/revenue, 2007 (\$1,000) (c)	2,796,825	5,905,080	965,553	1,600,370	102,029,316	1,668,276,808
Total manufacturers' shipments, 2007 (\$1,000) (c)	6,767,571	10,921,814	644,949	1,634,749	104,832,907	5,319,456,312

2015 Census People QuickFacts	Brevard County	Orange County	Osceola County	Seminole County	Florida	United States
Total merchant wholesaler sales, 2007 (\$1,000) (c)	1,852,661	17,080,688	3,044,187	2,852,650	221,641,518	4,174,286,516
Total retail sales, 2007 (\$1,000) (c)	6,593,988	19,195,634	2,868,737	6,872,148	262,341,127	3,917,663,456
Total retail sales per capita, 2007 (c)	\$12,339	\$18,005	\$11,107	\$16,831	\$14,353	\$12,990
Mean travel time to work (minutes), workers age 16 years+, 2010-2014	24.1	26.4	30.6	26.7	26.1	25.7
Median household income (in 2014 dollars), 2010-2014	\$48,483	\$47,556	\$44,551	\$57,875	\$47,212	\$53,482
Per capita income in past 12 months (in 2014 dollars), 2010-2014	\$27,360	\$25,052	\$18,996	\$28,870	\$26,499	\$28,555
Persons in poverty, percent	14.50%	18.20%	19.30%	11.80%	16.50%	14.80%
Total employer establishments, 2013	13,084	33,317	5,090	12,639	510389(1)	7,488,353
Total employment, 2013	161,218	640,229	65,594	152,363	7134644(1)	118,266,253
Total annual payroll, 2013	6,603,879	26,272,604	1,924,439	6,057,070	294142009 (1)	5,621,697,325
Total employment, percent change, 2012-2013	-0.90%	3%	3.80%	1.60%	2.9% (1)	2%
Total non-employer establishments, 2013	39,045	110,458	25,694	38,346	1,838,864	23,005,620
All firms, 2007	45,939	113,155	24,646	46,725	2,009,589	27,092,908
Men-owned firms, 2007	22,448	57,126	12,545	23,393	1,036,446	13,900,554
Women-owned firms, 2007	13,970	33,788	7,140	13,459	581,096	7,792,115
Minority-owned firms, 2007	6,674	42,332	11,936	9,411	680,069	5,759,209
Nonminority-owned firms, 2007	36,671	63,502	11,131	34,372	1,228,495	20,100,926
Veteran-owned firms, 2007	5,049	8,463	1,615	4,509	176,788	2,447,608
Nonveteran-owned firms, 2007	36,712	95,200	21,425	37,858	1,685,712	22,627,611
Population per square mile, 2010	535	1268.5	202.4	1367	350.6	87.4
Land area in square miles, 2010	1,015.66	903.43	1,327.45	309.22	53,624.76	3,531,905.43
FIPS Code	"12009"	"12095"	"12097"	"12117"	"12"	"00"

The following maps show the Veteran population in Florida and PSA 7. As shown in the chart above, in Florida, just over 20% of the civilian Veteran population is 60 years of age or older. The majority of veterans in Central Florida live in Orange County and around Patrick Airforce Base in Brevard.

## VETERANS IN FLORIDA AND PSA 7



- The New VA Medical Center in Osceola County
- Patrick Air Force Base in Brevard County

- Lake Baldwin Clinic in Orange County



## PSA 7 Statistical Summary

Orange County has the largest population in the Central Florida area, making up 49% of PSA 7; however, while Brevard County only makes up 22% of PSA 7's total population, the two counties are similar in terms of their makeup of PSA 7's senior population, with Orange county making up 39% and Brevard making up 32%. In terms of ethnicity, Orange County has the highest percentage of 60+ African Americans (18%) while Osceola County has the highest percentage of 60+ Hispanics (35%). Osceola County also has the highest percentage of 60+ with limited English proficiency (16%). The Department of Elder Affairs does not classify any of the counties in PSA 7 as Rural. The 2017-2020 State Plan on Aging shows the following rural statistics:

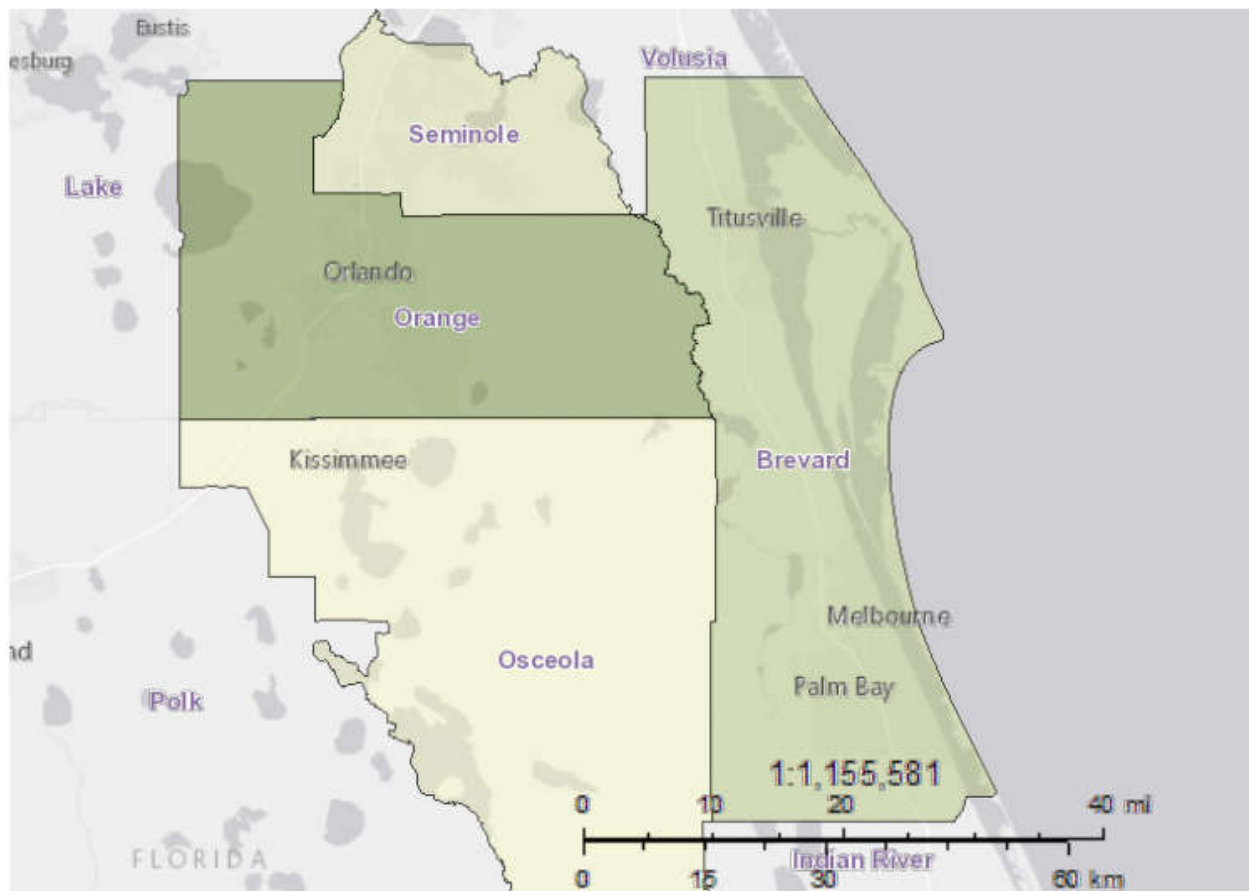
County	Total 60+ Urban	Total 60+ Rural	Total 60+ Population	Percent Rural
Brevard	154,327	2,167	156,494	1%
Orange	185,718	147	185,865	0%
Osceola	48,905	949	49,853	2%
Seminole	83,194	1,036	84,230	1%

Osceola County has the largest land area of PSA 7 (1,327 square miles) and the smallest total population (306,924) and senior population (52,537), has a significantly higher percentage of medically underserved seniors (87%, followed by Brevard County at 27%). The 60+ population with 2 or more disabilities hovers around 6-7% for all four counties. As in previous years, the factor to highlight is the 60+ living alone, at roughly 22% in PSA 7. While the current statistic is less than in previous years, the **2014 Census ACS 5-Year Estimate** shows that this will increase up to 37% in PSA 7, 39% in Florida, and 40% in the U.S. According to these statistics, PSA 7 follows the state and national trend for the percentage of 60+ ethnic populations at 30%; widowed at 21%; in the labor force at 27%; and near or below the poverty level at 9% to 10%. Those living with grandchildren represent 7% of the 60+ population, a little higher than the state and national average of 5%.

The following maps from the **2014 Census ACS 5-Year Estimate** highlight the following target segments within PSA 7 at the county and census tract level:

- Elders with low income
- Socially isolated elders
- African American elders
- Hispanic elders
- Asian elders

## Elders with Low Incomes- County Level



### Legend:

#### Data Classes

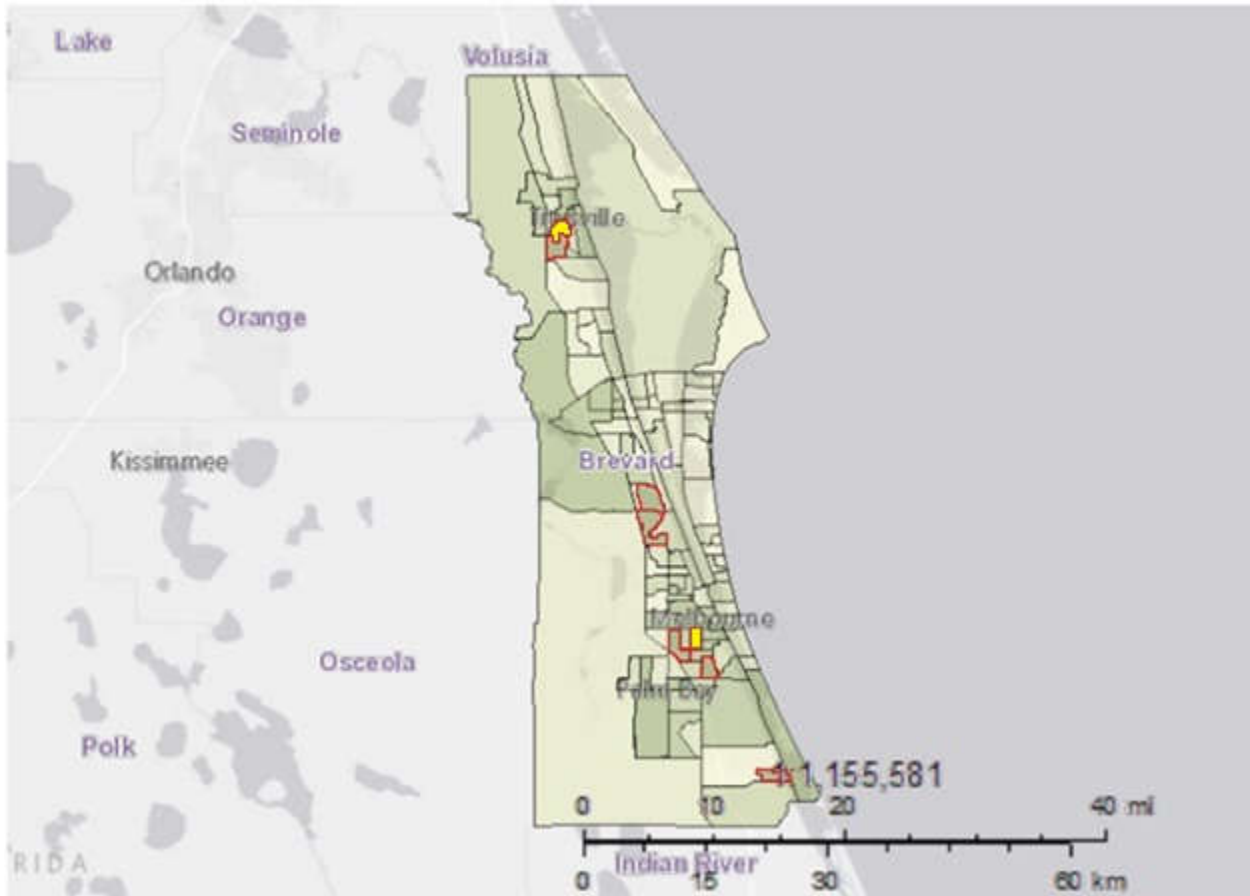
##### Persons



The map above depicts the estimate of persons age 65+ who are living below the poverty level. Data from the 2014 ACS 5-Year Estimate indicate that Orange County has the highest number of seniors living below the poverty level (13,153). This is followed by Brevard (8,516), Seminole (4,544), and Osceola County (4,112).

The following maps depict the estimates of persons age 65+ living below the poverty level throughout each of the four counties at the census tract level, with the highest BPL census tracts and their respective ZIP Codes listed in the accompanying charts. It must be noted that many census tracts overlap ZIP Code borders, so only those ZIP Codes with the highest ratio of residential addresses are used here.

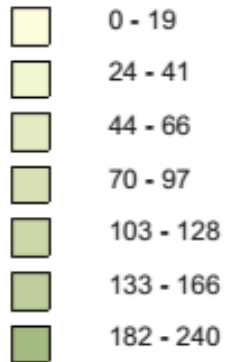
**Elders with Low Income- Census Tract Level  
Brevard County**



**Legend:**

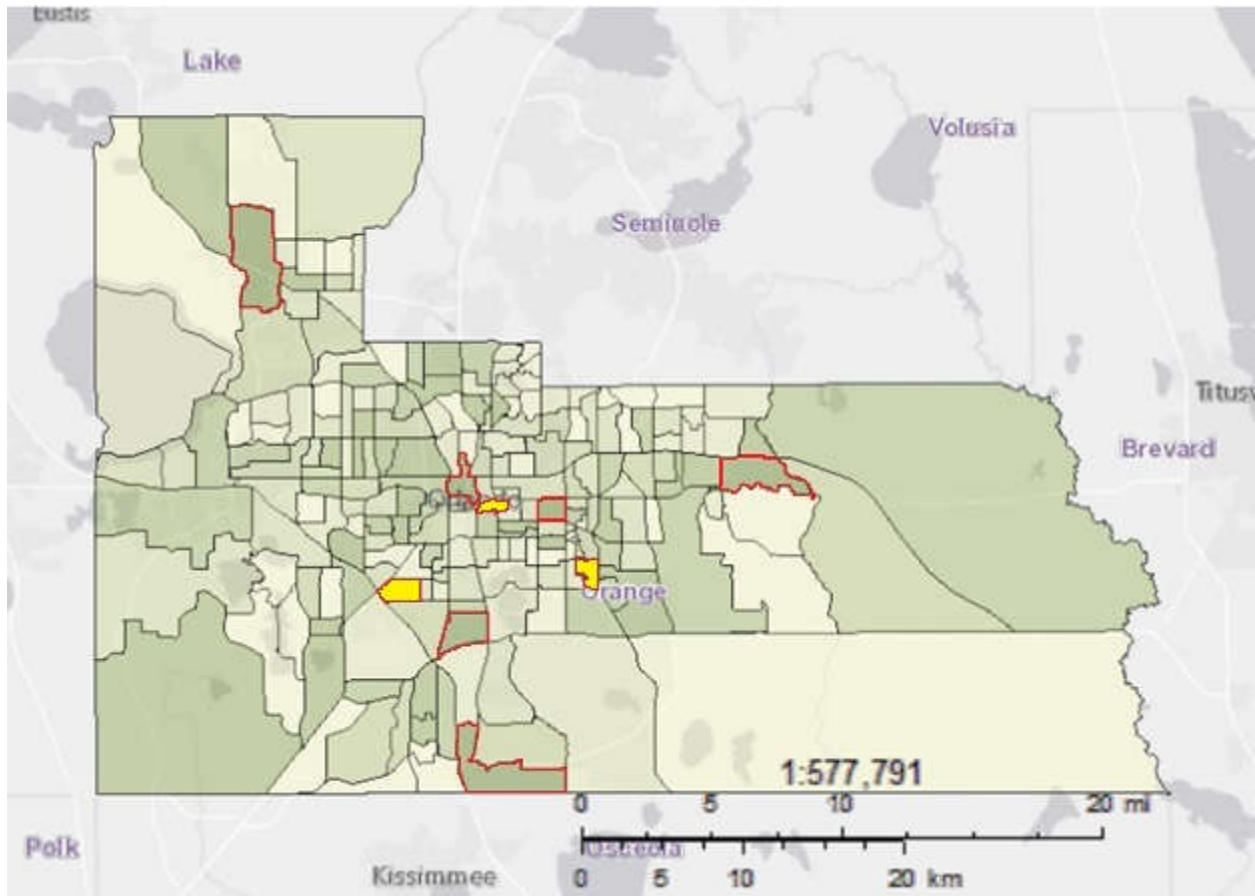
**Data Classes**

**Persons**



Census Tract	ZIP Code	Estimate 65+ BPL
652.35	32976	240
611	32780	225
641.28	32940	209
649.01	32901	203
651.22	32905	201
606	32780	194
650.21	32904	186
631.07	32940	182

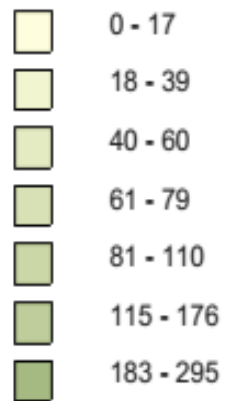
## Elders with Low Incomes - Orange County



### Legend:

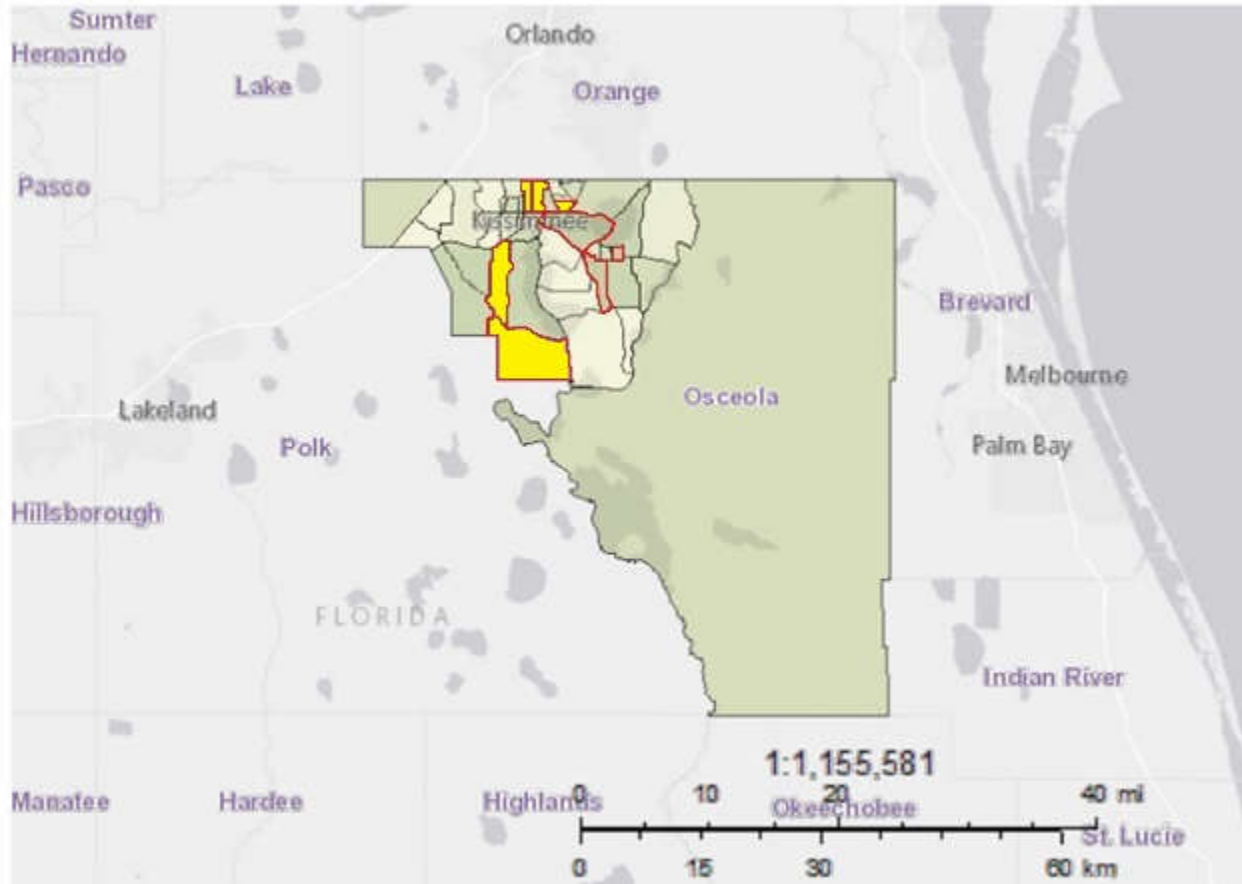
#### Data Classes

#### Persons



Census Tract	ZIP Code	Estimate 65+ BPL
189	32801	295
178.02	32712	248
133	32807	240
103	32801	239
167.29	32828	217
142	32809	206
168.07	32824	193
169.03	32839	189
135.11	32822	183








## Elders with Low Incomes - Osceola County



### Legend:

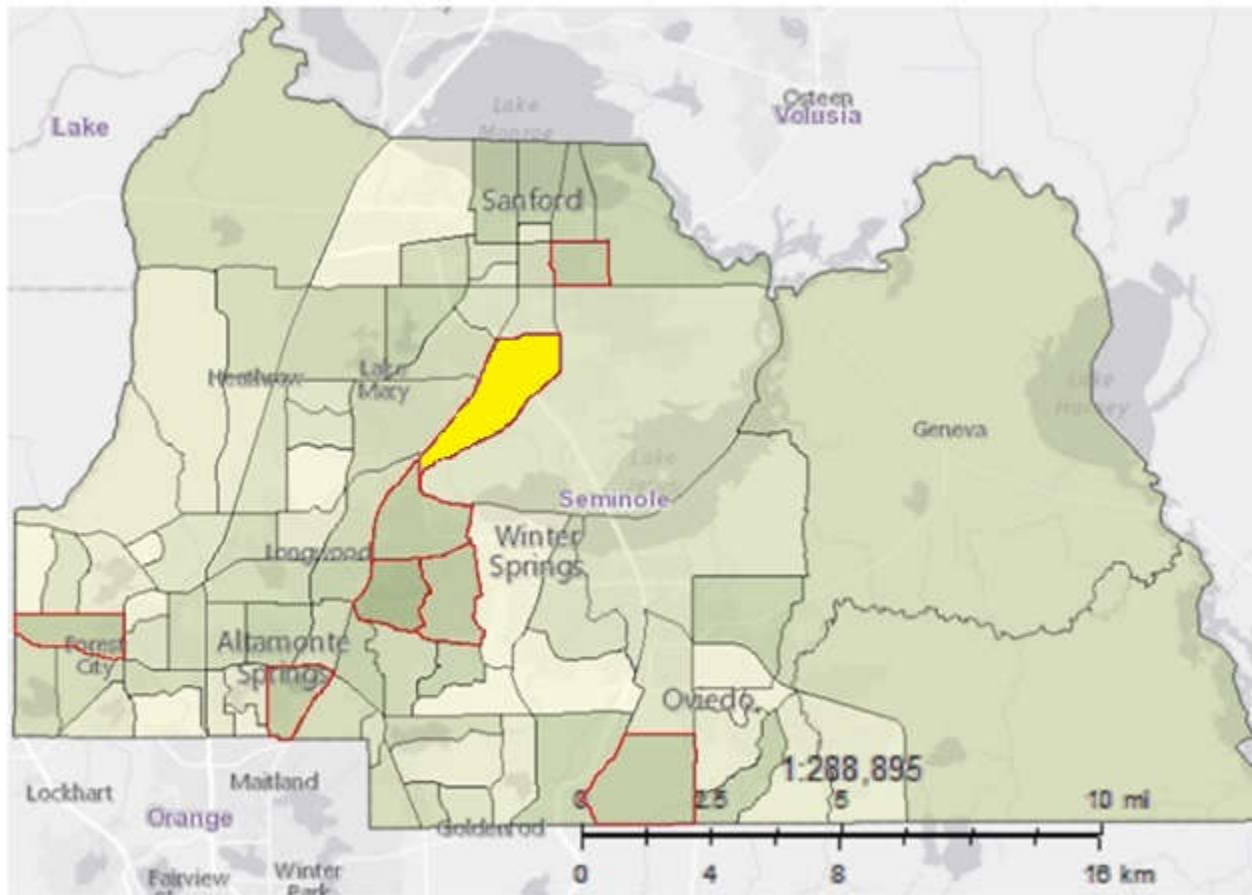
#### Data Classes

##### Persons

	0 - 21
	39 - 46
	53 - 53
	72 - 98
	108 - 139
	187 - 308
	466 - 466

Census Tract	ZIP Code	Estimate 65+ BPL
413	34758	466
423	34744	308
435	34769	262
429	34744	259
422	34741	251
410.01	34746	220
427.01	34743	198
432.04	34772	187

## Elders with Low Incomes - Seminole County



### Legend:

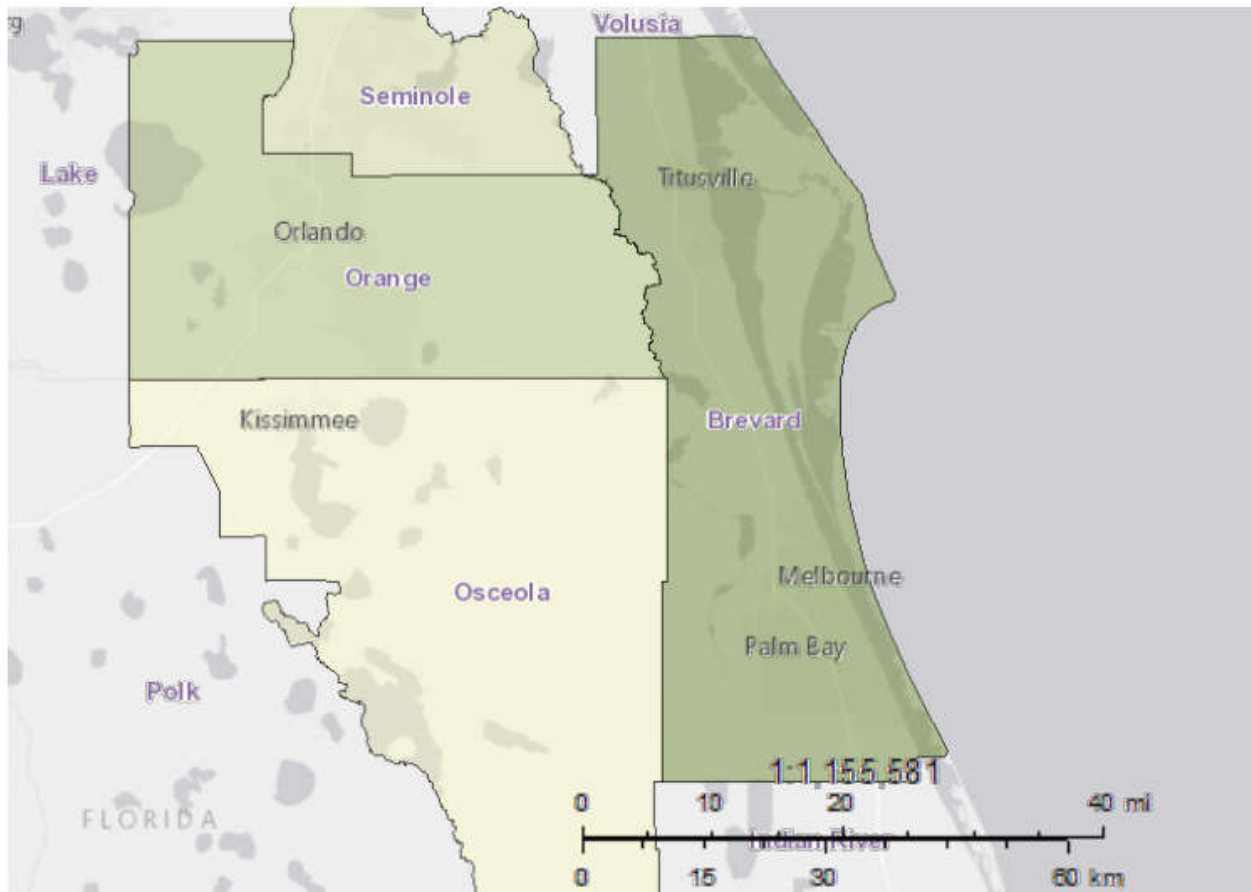
#### Data Classes

##### Persons

	0 - 12
	13 - 24
	27 - 42
	44 - 69
	72 - 106
	135 - 191
	213 - 279

Census Tract	ZIP Code	Estimate 65+ BPL
221.01	32707	279
209.03	32773	213
218.02	32701	191
216.06	32714	172
202.02	32771	159
214.01	32708	147
213.17	32765	141
214.04	32708	135

## Socially Isolated Elders- County Level



### Legend:

#### Data Classes

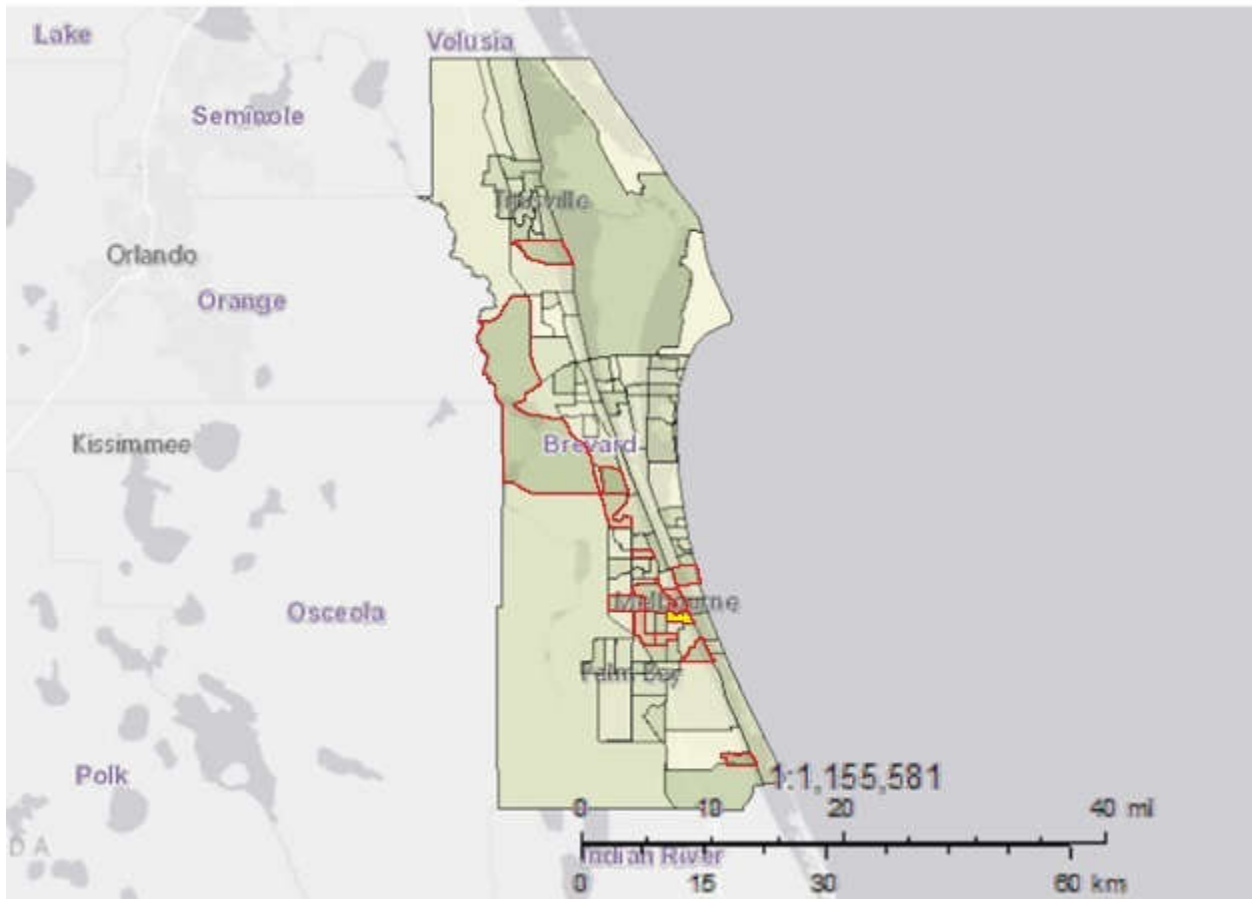
##### Persons

<span style="display: inline-block; width: 15px; height: 15px; background-color: #ffffcc; border: 1px solid black;"></span>	6,545 - 6,545
<span style="display: inline-block; width: 15px; height: 15px; background-color: #d9ead3; border: 1px solid black;"></span>	12,510 - 12,510
<span style="display: inline-block; width: 15px; height: 15px; background-color: #c4e1a8; border: 1px solid black;"></span>	27,112 - 27,112
<span style="display: inline-block; width: 15px; height: 15px; background-color: #94d08f; border: 1px solid black;"></span>	30,272 - 30,272

The map above depicts the estimate of persons age 65+ who are living alone. Data from the 2014 ACS 5-Year Estimate indicate that Brevard County has the highest number of seniors living alone (30,272). This is followed by Orange (27,112), Seminole (12,510), and Osceola County (6,545).

The following maps depict the estimates of persons age 65+ living alone throughout each of the four counties at the census tract level, with the census tracts with the highest number of socially isolated elders and their respective ZIP Codes listed in the accompanying charts. It must be noted that many census tracts overlap ZIP Code borders, so only those ZIP Codes with the highest ratio of residential addresses are used here.

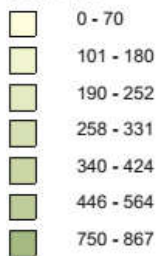
## Socially Isolated Elders- Census Tract Level - Brevard County



### Legend:

#### Data Classes

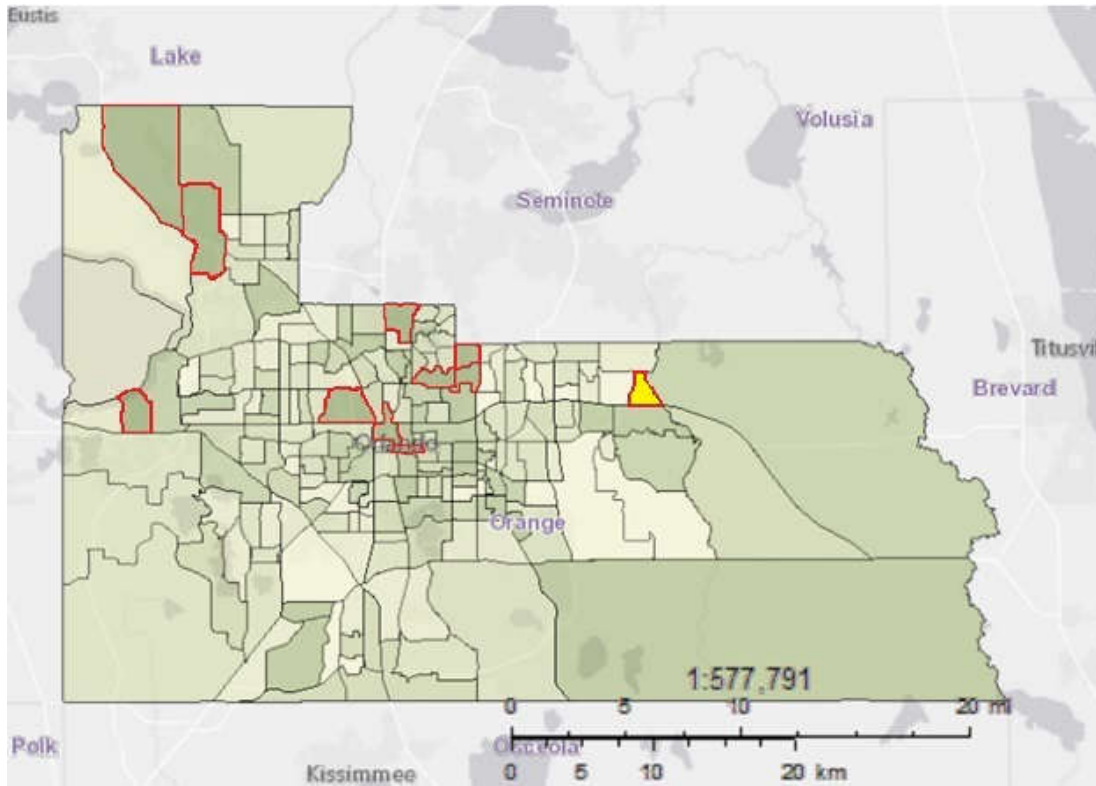
##### Persons



Census	ZIP Code	# Living
631.07	32940	867
652.35	32976	750
651.25	32901	564
712	32940	554
647	32901	535
649.02	32901	529
650.21	32904	527
648	32901	491
652.01	32905	489
641.23	32935	472
646.01	32904	465
641.28	32940	457
663.01	32903	453
612.01	32780	446










## Socially Isolated Elders - Orange County



### Legend:

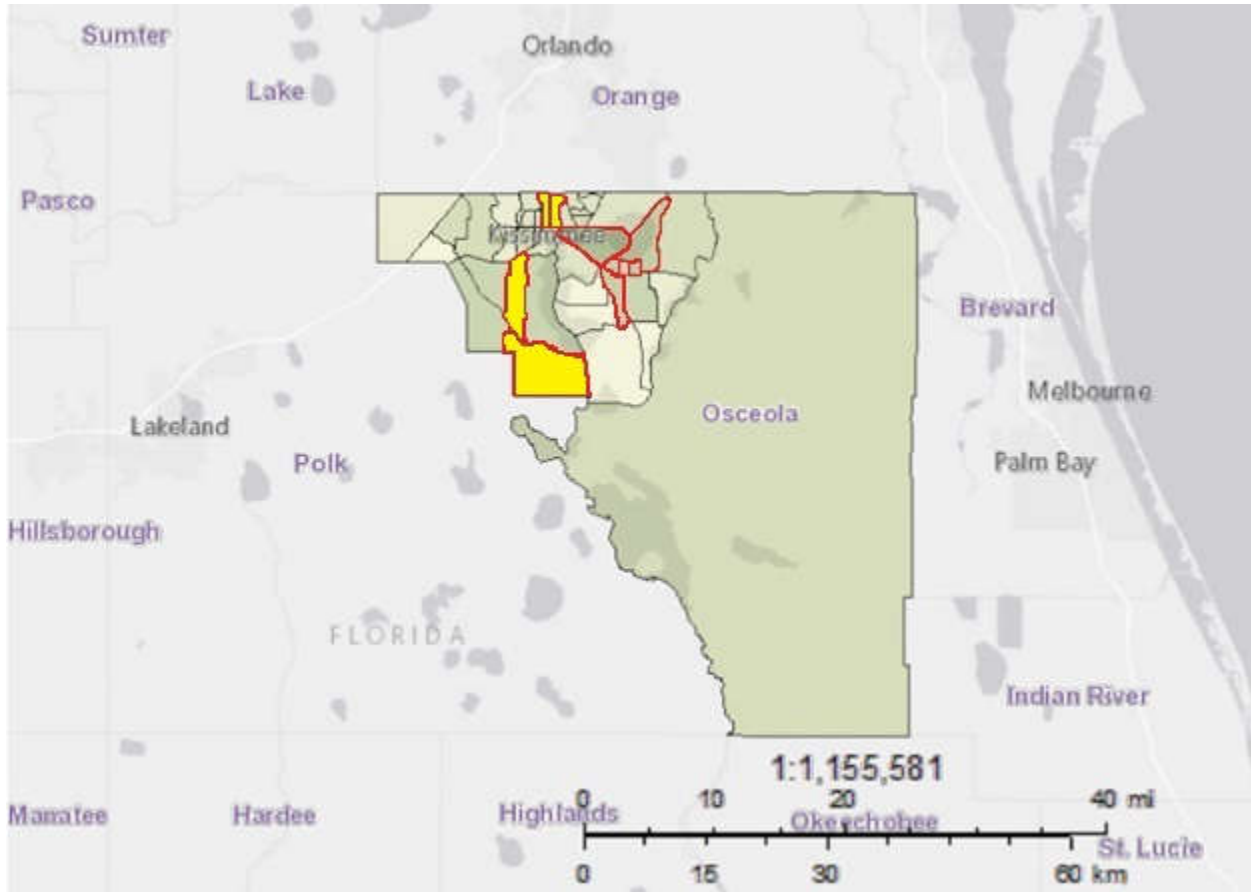
#### Data Classes

##### Persons

	0 - 36
	39 - 74
	75 - 116
	120 - 167
	171 - 222
	229 - 338
	407 - 667

Census Tract	ZIP Code	# Living Alone
189	32801	667
179.02	32798	493
103	32801	481
162	32792	472
163.01	32792	453
165.09	32826	447
161	32789	442
155.01	32751	433
187	32808	429
173	34787	420
178.02	32712	407

## Socially Isolated Elders - Osceola County



### Legend:

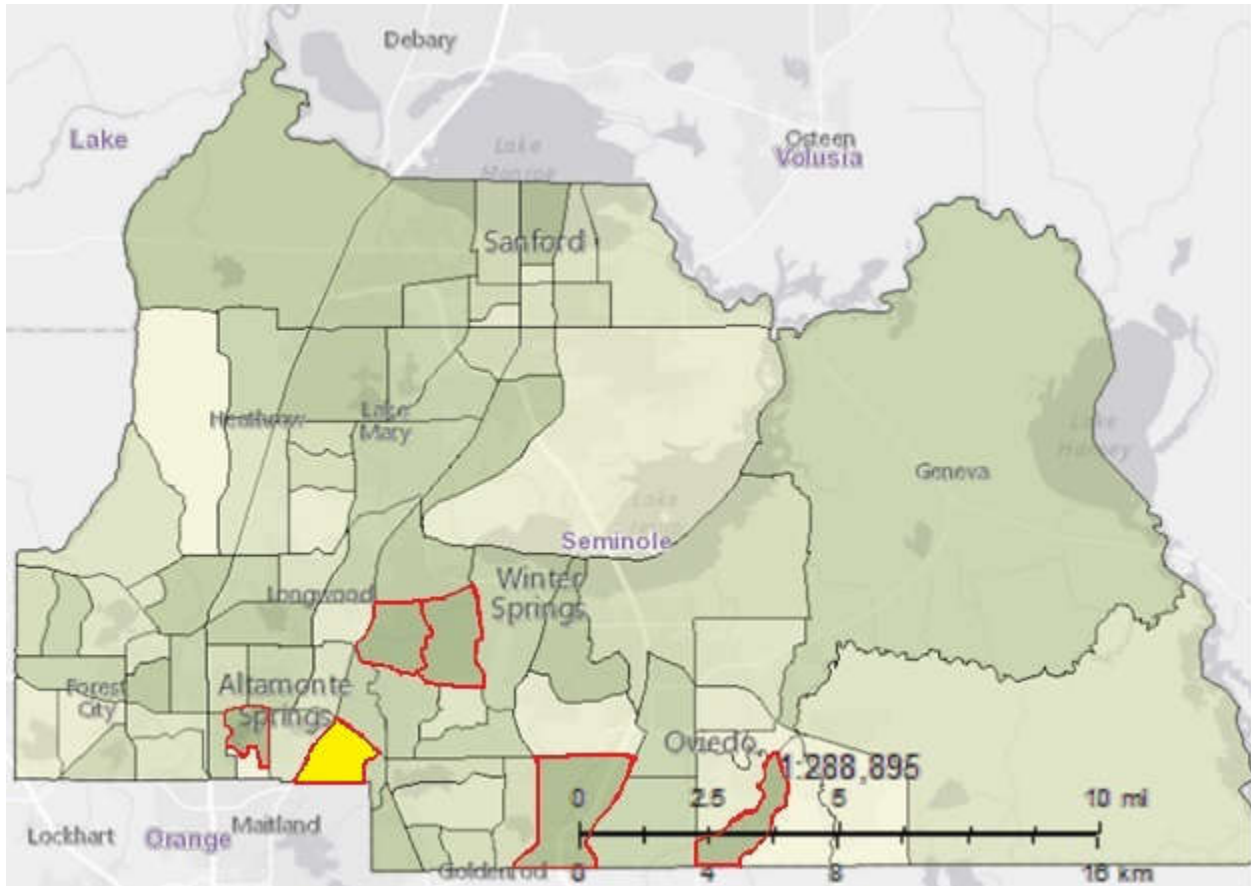
#### Data Classes

##### Persons

0 - 30
51 - 75
84 - 115
128 - 166
206 - 220
251 - 304
376 - 559

Census Tract	ZIP Code	# Living Alone
410.01	34746	559
423	34744	449
422	34741	389
429	34744	376
413	34758	304
435	34769	297
432.03	34769	284
432.04	34772	266
436	34771	251

## Socially Isolated Elders - Seminole County



### Legend:

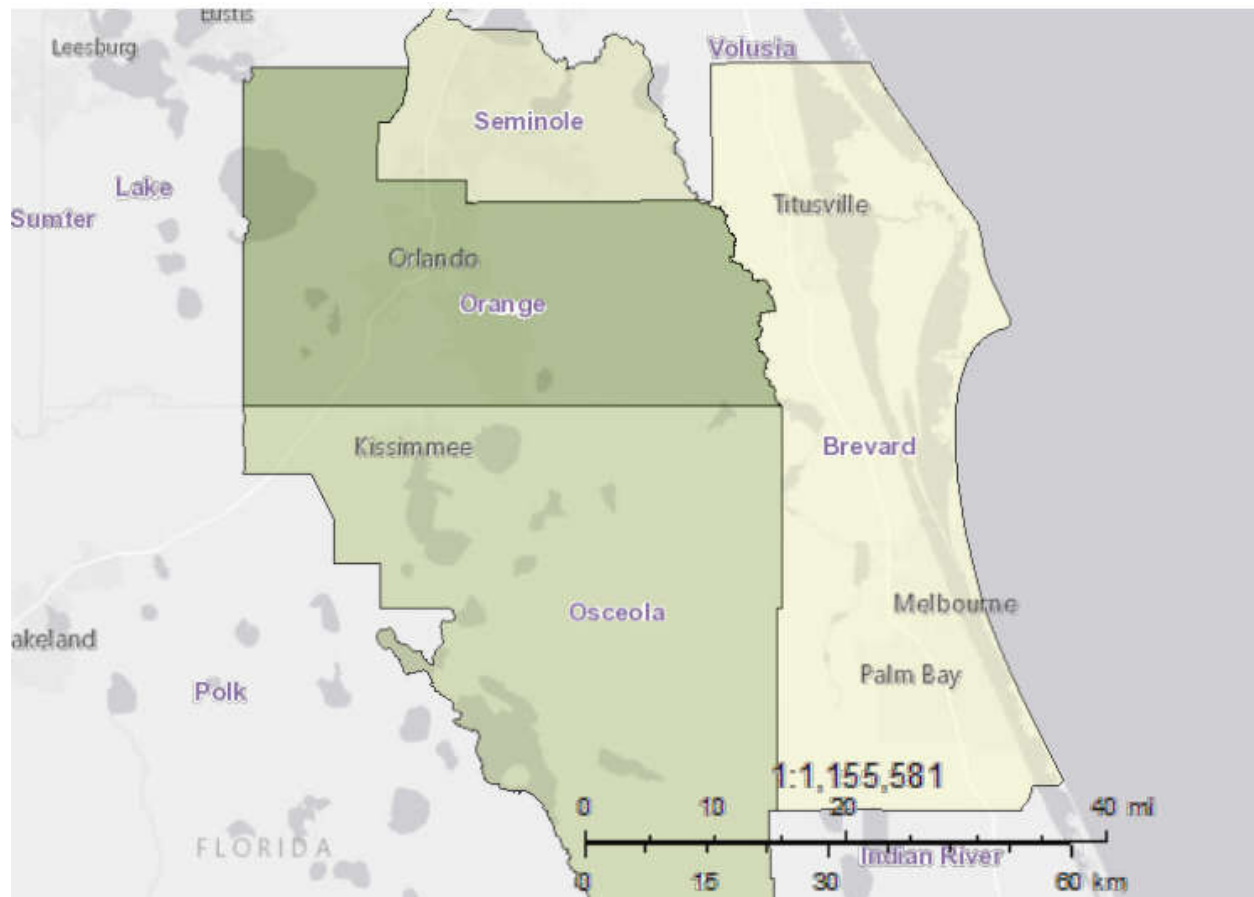
#### Data Classes

##### Persons

8 - 20
35 - 61
66 - 91
97 - 133
138 - 199
250 - 297
362 - 563

Census Tract	ZIP Code	# Living Alone
218.06	32701	563
213.18	32765	519
221.01	32707	423
220.05	32730	365
214.04	32708	363
213.15	32765	362

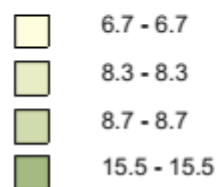
## Minority and Culturally Diverse Elders: African American Population- Cou



### Legend:

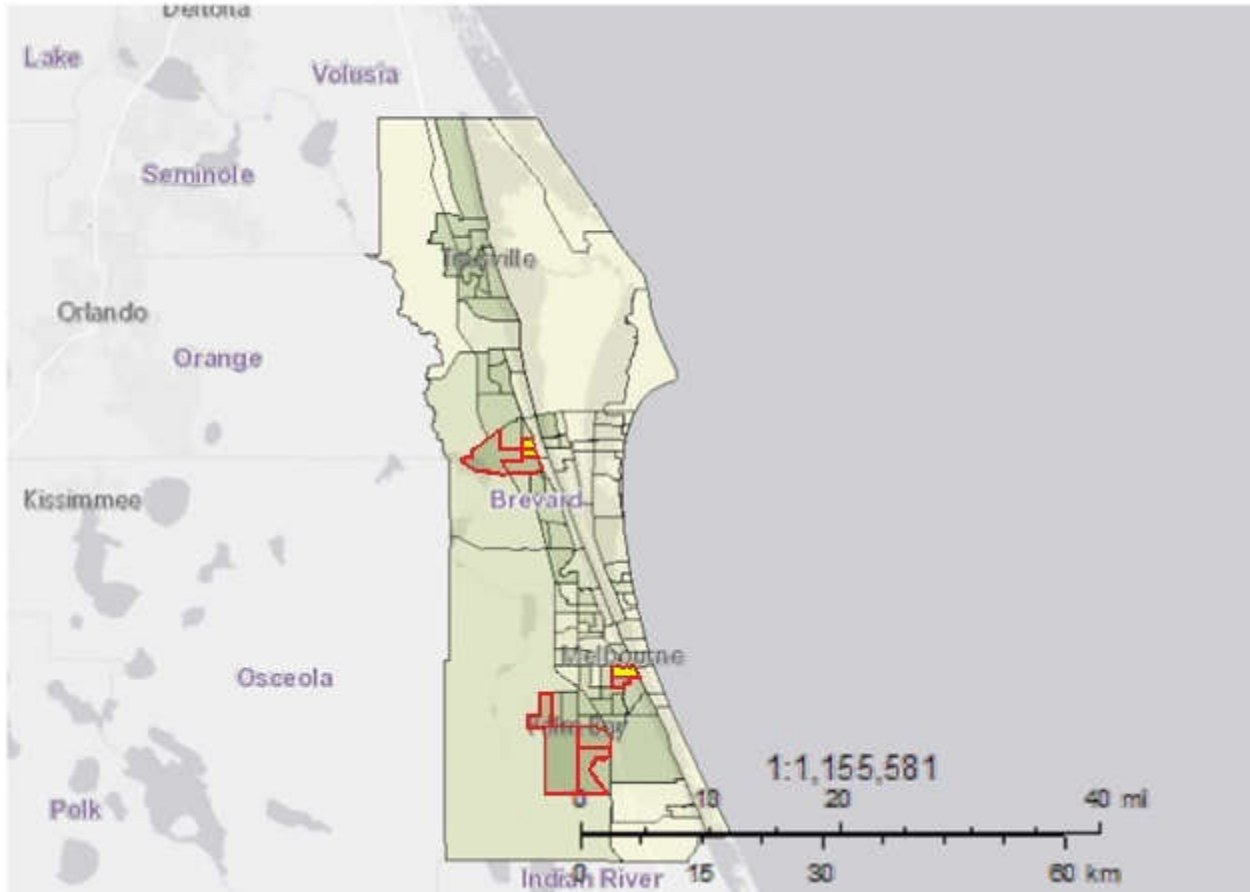
#### Data Classes

##### Percent



The map above depicts the percent estimate of the 60+ African American population. Data from the 2014 ACS 5-Year Estimate indicate that Orange County has the highest percentage of Black seniors (15.5% of the county's 60+ population). This is followed by Osceola (8.7%), Seminole (8.3%), and Brevard County (6.7%). The ACS does not currently provide data on the 60+ African American population at the census tract level, and the mapping capabilities of the American FactFinder allow for only one data point to be mapped at a time. For this reason, the following maps depict the estimates of African Americans of all ages throughout each of the four counties at the census tract level, with the highest concentration census tracts and ZIP Codes listed in the accompanying charts.

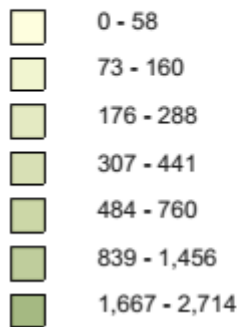
## African American Population- Census Tract Level Brevard County



### Legend:

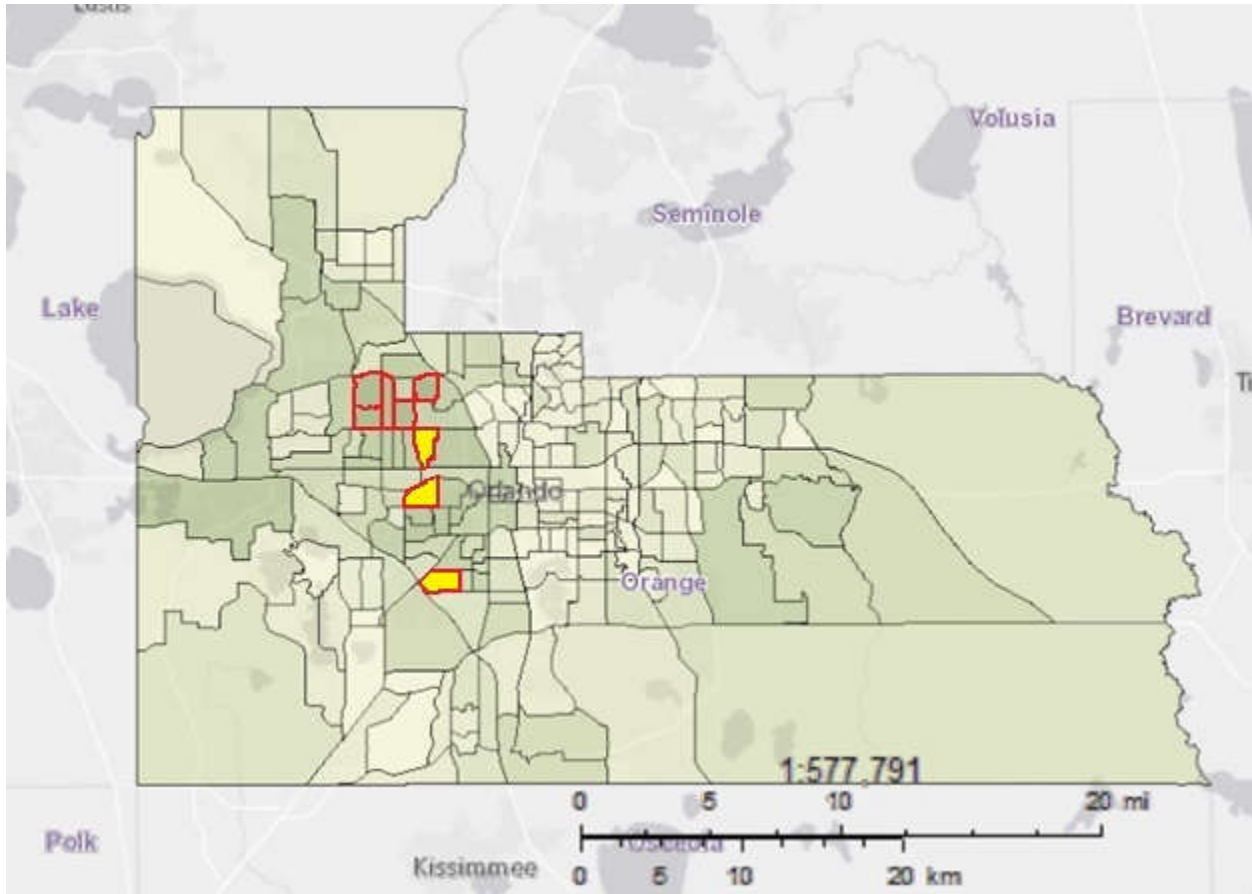
#### Data Classes

#### Persons



Census Tract	ZIP Code	# African American
713.32	32908	2,714
713.40	32909	2,382
626	32922	2,007
713.22	32909	1,960
623.01	32922	1,952
651.24	32901	1,892
713.38	32907	1,789
629	32955	1,776
625	32926	1,698
649.02	32901	1,667

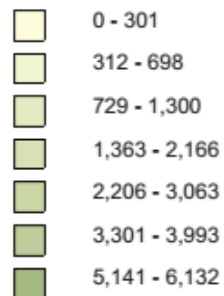
## African American Population - Orange County



### Legend:

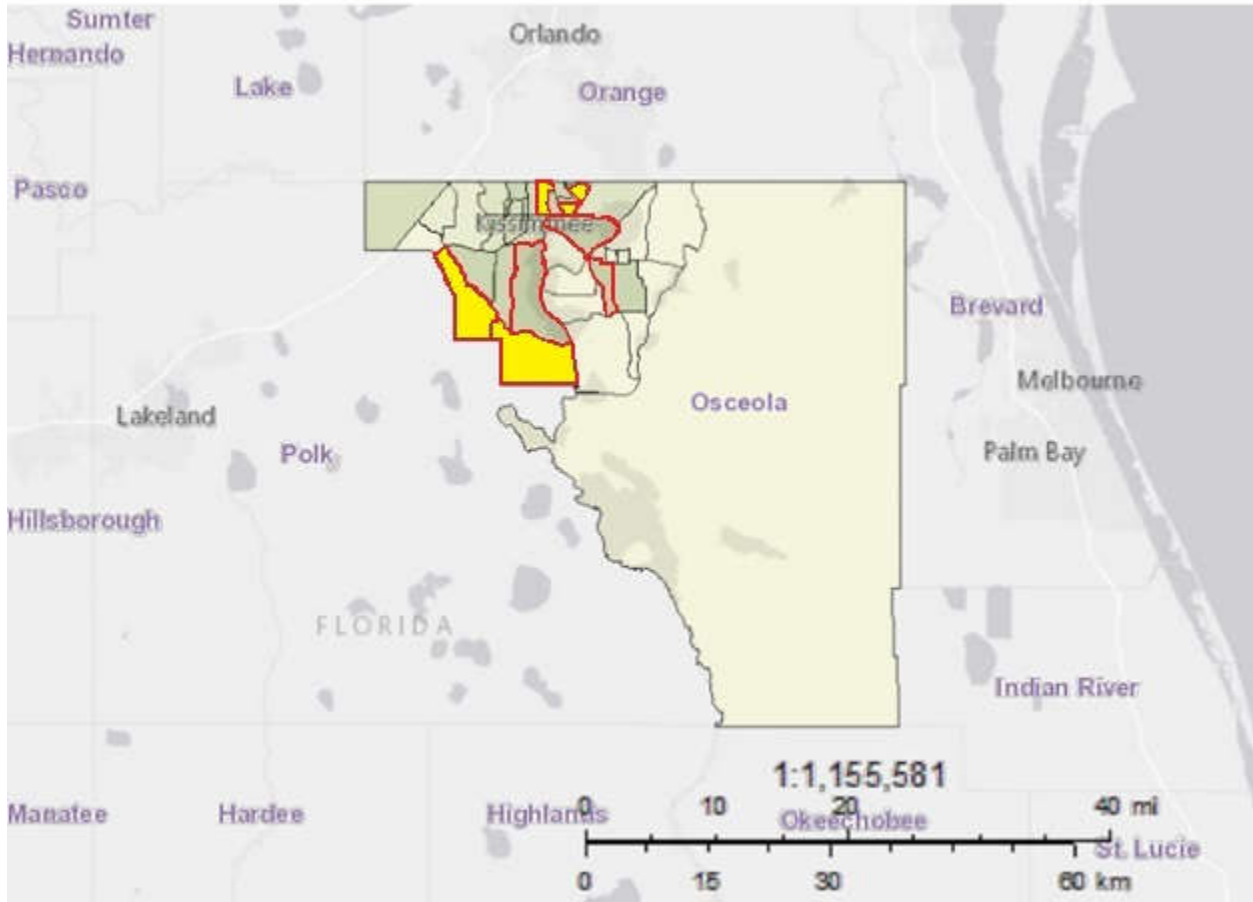
#### Data Classes

##### Persons



Census Tract	ZIP Code	# African American
123.05	32818	6,132
124.01	32808	6,052
169.03	32839	5,628
123.07	32808	5,596
146.01	32811	5,455
123.04	32818	5,342
120	32808	5,228
123.03	32818	5,141

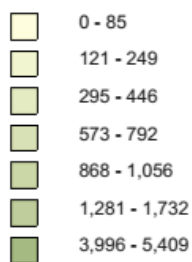
## African American Population - Osceola County



### Legend:

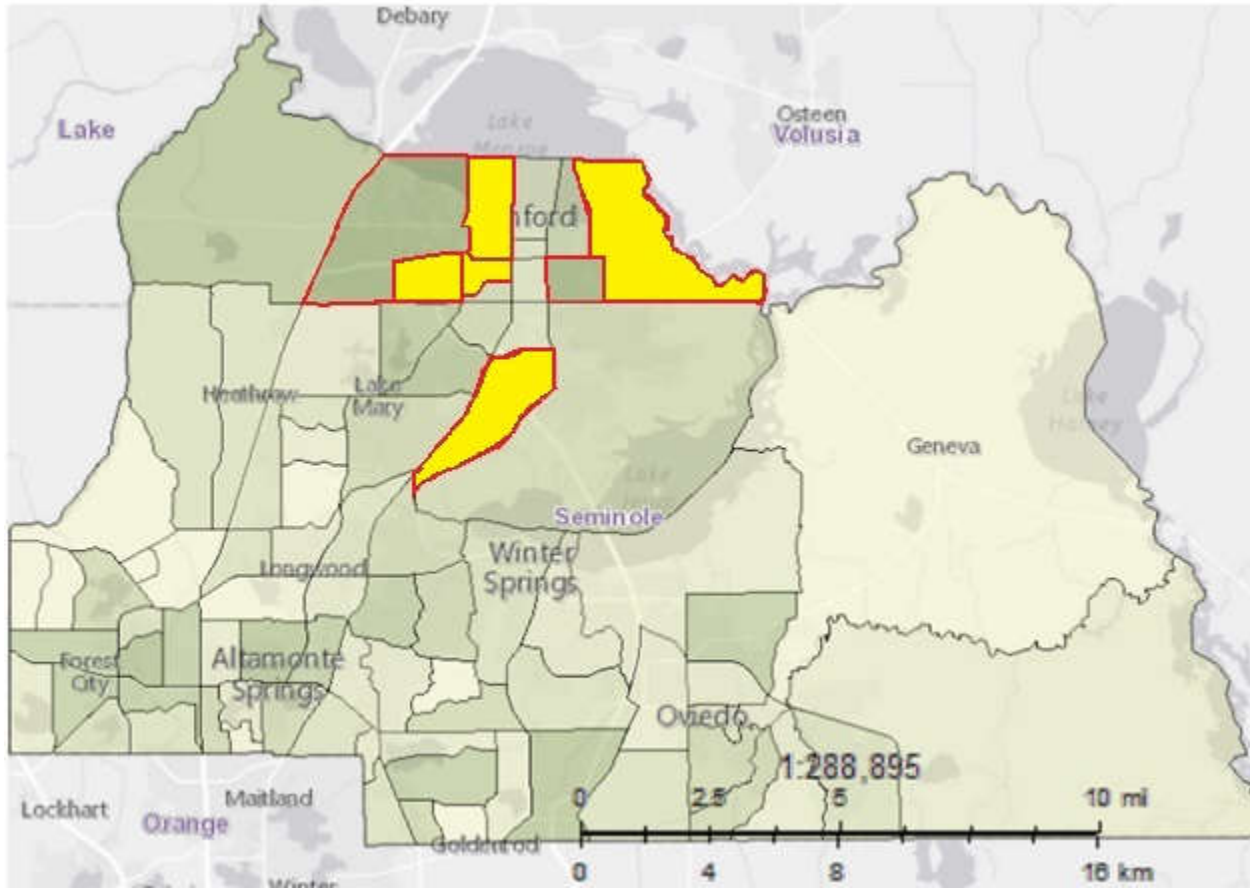
#### Data Classes

##### Persons



Census Tract	ZIP Code	# African American
411	34758	5,409
413	34758	3,996
432.04	34772	1,732
429	34744	1,578
426.02	34743	1,561
415	34746	1,483
427.01	34743	1,420
423	34744	1,281

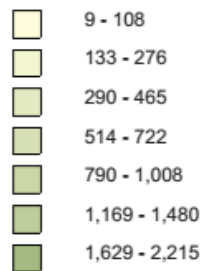
## African American Population - Seminole County



### Legend:

#### Data Classes

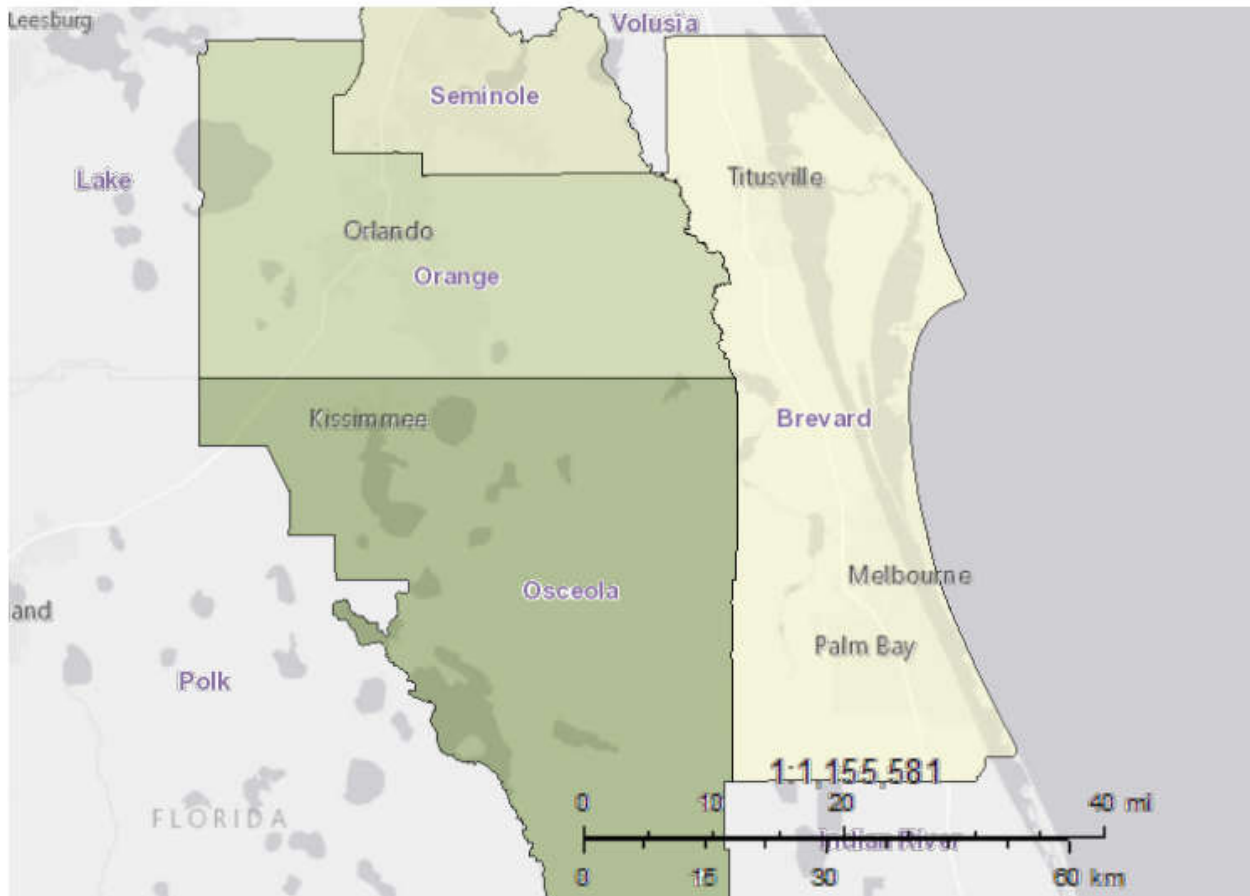
##### Persons



Census Tract	ZIP Code	# African American
204.02	32771	2,215
202.02	32771	2,092
206	32771	1,941
209.03	32773	1,890
204.01	32771	1,811
205	32771	1,688
211	32771	1,629



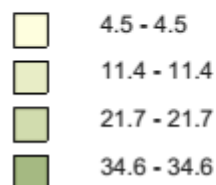
## Minority and Culturally Diverse Elders: Hispanic Population- County Level



### Legend:

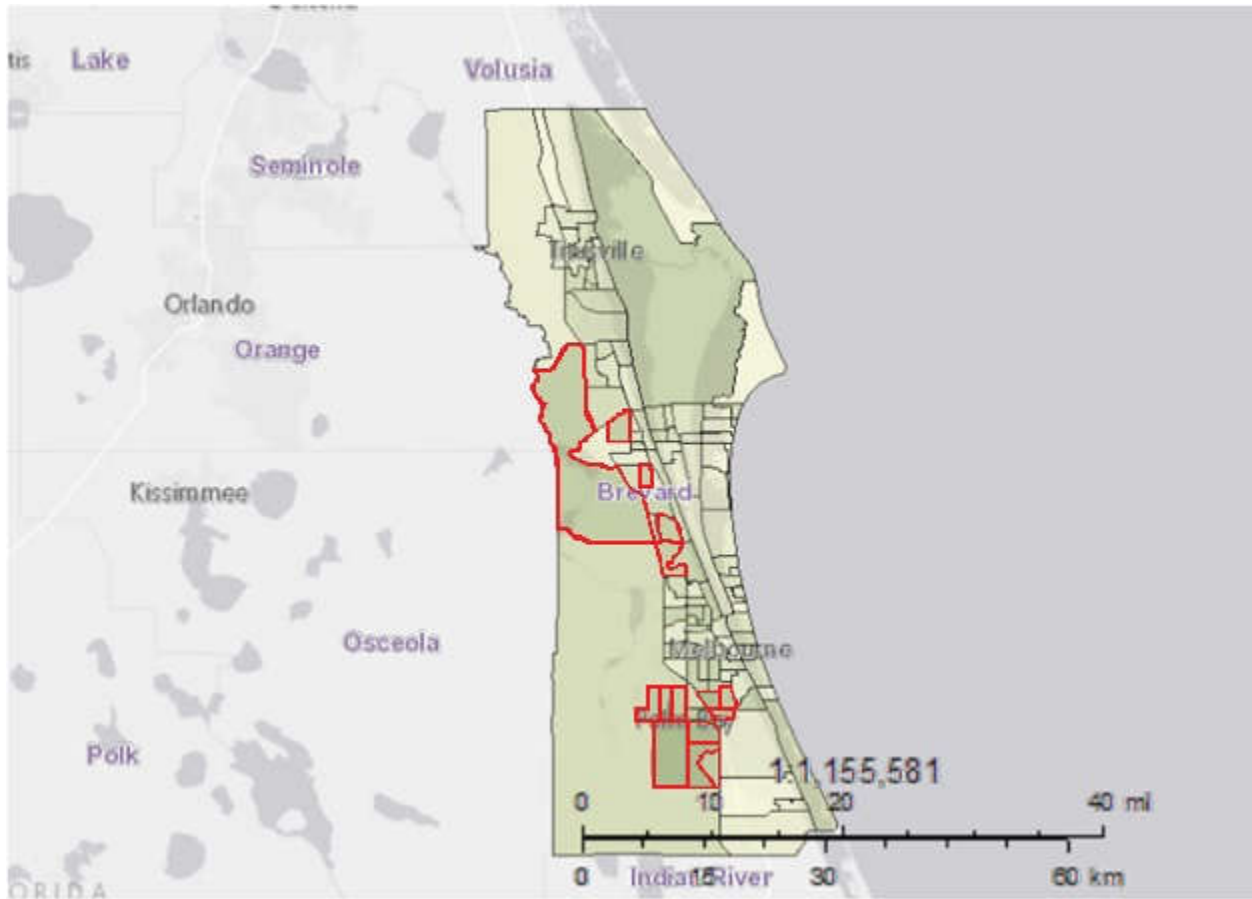
#### Data Classes

##### Percent



The map above depicts the percent estimate of the 60+ Hispanic population. Data from the 2014 ACS 5-Year Estimate indicate that Osceola County has the highest percentage of Hispanic seniors (34.6% of the county's 60+ population). This is followed by Orange (21.7%), Seminole (11.4%), and Brevard County (4.5%). The ACS does not currently provide data on the 60+ Hispanic population at the census tract level, and the mapping capabilities of the American FactFinder allow for only one data point to be mapped at a time. For this reason, the following maps depict the estimates of Hispanics of all ages throughout each of the four counties at the census tract level, with the highest concentration census tracts and ZIP Codes listed in the accompanying charts.

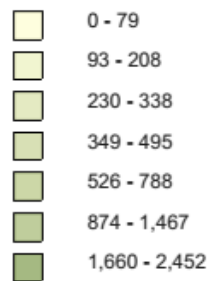
## Hispanic Population- Census Tract Level Brevard County



### Legend:

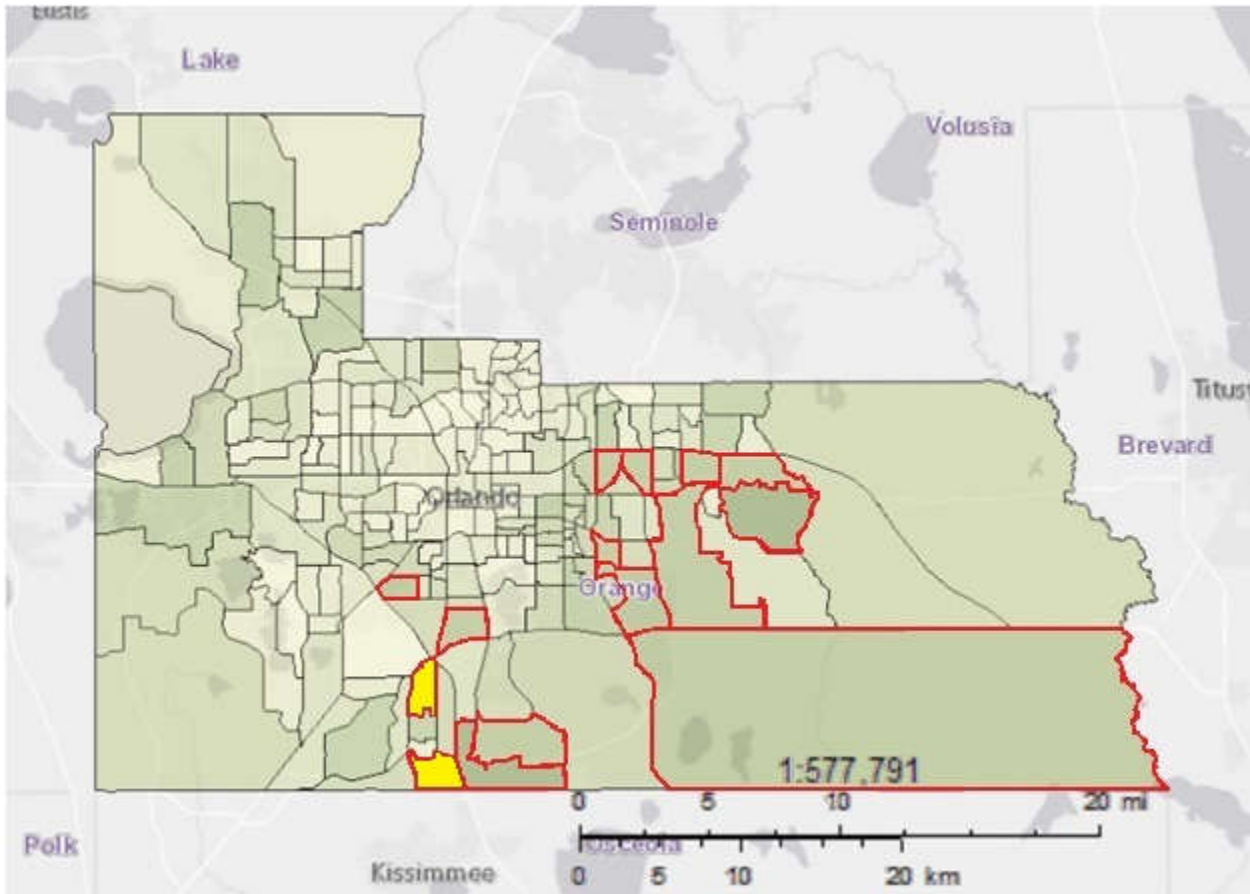
#### Data Classes

#### Persons



Census	ZIP Code	# Hispanic
713.22	32909	2,452
713.32	32908	1,998
713.40	32909	1,803
651.21	32905	1,660
641.28	32940	1,467
712	32940	1,414
713.38	32907	1,210
713.39	32909	1,151
713.34	32907	1,075
631.07	32940	1,071
624	32926	1,047
713.37	32907	1,025
651.22	32905	997
631.05	32955	976
652.02	32907	874

## Hispanic Population - Orange County



### Legend:

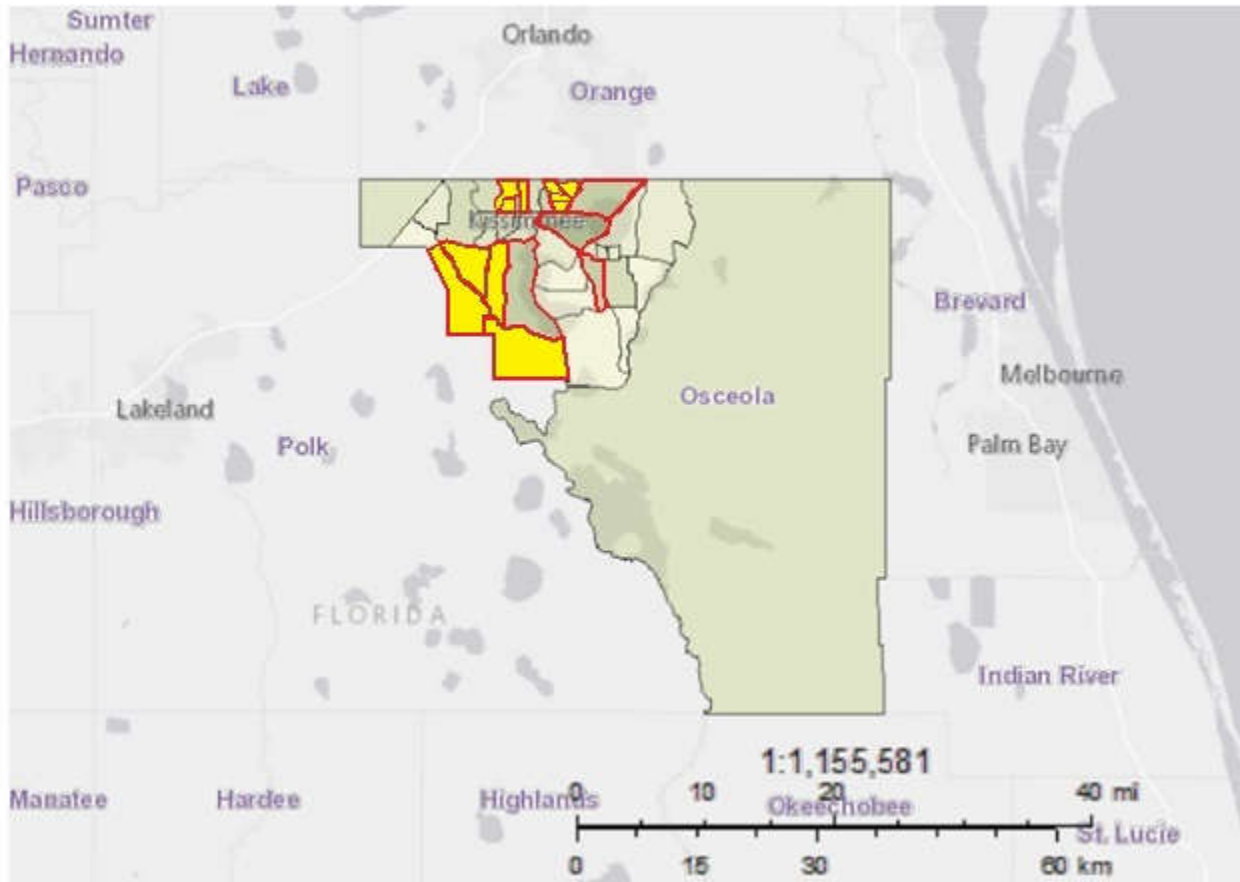
#### Data Classes

##### Persons

<span style="display:inline-block; width:15px; height:15px; background-color:#ffffcc;"></span>	0 - 492
<span style="display:inline-block; width:15px; height:15px; background-color:#fff2cc;"></span>	515 - 1,041
<span style="display:inline-block; width:15px; height:15px; background-color:#f4e0d1;"></span>	1,087 - 1,873
<span style="display:inline-block; width:15px; height:15px; background-color:#f0c0a0;"></span>	1,928 - 2,715
<span style="display:inline-block; width:15px; height:15px; background-color:#e0a080;"></span>	2,870 - 3,959
<span style="display:inline-block; width:15px; height:15px; background-color:#c08060;"></span>	4,500 - 7,654
<span style="display:inline-block; width:15px; height:15px; background-color:#a06040;"></span>	10,653 - 12,682

Census	ZIP Code	# Hispanic
168.07	32824	12,682
167.30	32828	10,653
168.06	32824	7,654
167.29	32828	7,407
167.34	32829	6,276
167.04	32832	6,021
167.32	32825	5,721
169.03	32839	5,122
142	32809	5,088
167.12	32825	5,008
170.14	32837	4,726
170.08	32837	4,716
167.27	32828	4,660
167.09	32822	4,579
167.13	32825	4,500

# Hispanic Population - Osceola County



**Legend:**

**Data Classes**

Persons

- 11 - 149
- 506 - 928
- 1,158 - 2,100
- 2,593 - 3,689
- 4,283 - 4,747
- 5,195 - 6,704
- 8,037 - 9,139

Census	ZIP Code	# Hispanic
411	34758	9,139
429	34744	9,113
413	34758	8,084
426.02	34743	8,037
427.01	34743	6,704
428	34744	6,026
415	34746	5,752
421	34741	5,726
410.02	34758	5,583
425	34743	5,515
410.01	34746	5,483
420	34741	5,338
427.02	34743	5,242
422	34741	5,197
432.04	34772	5,195